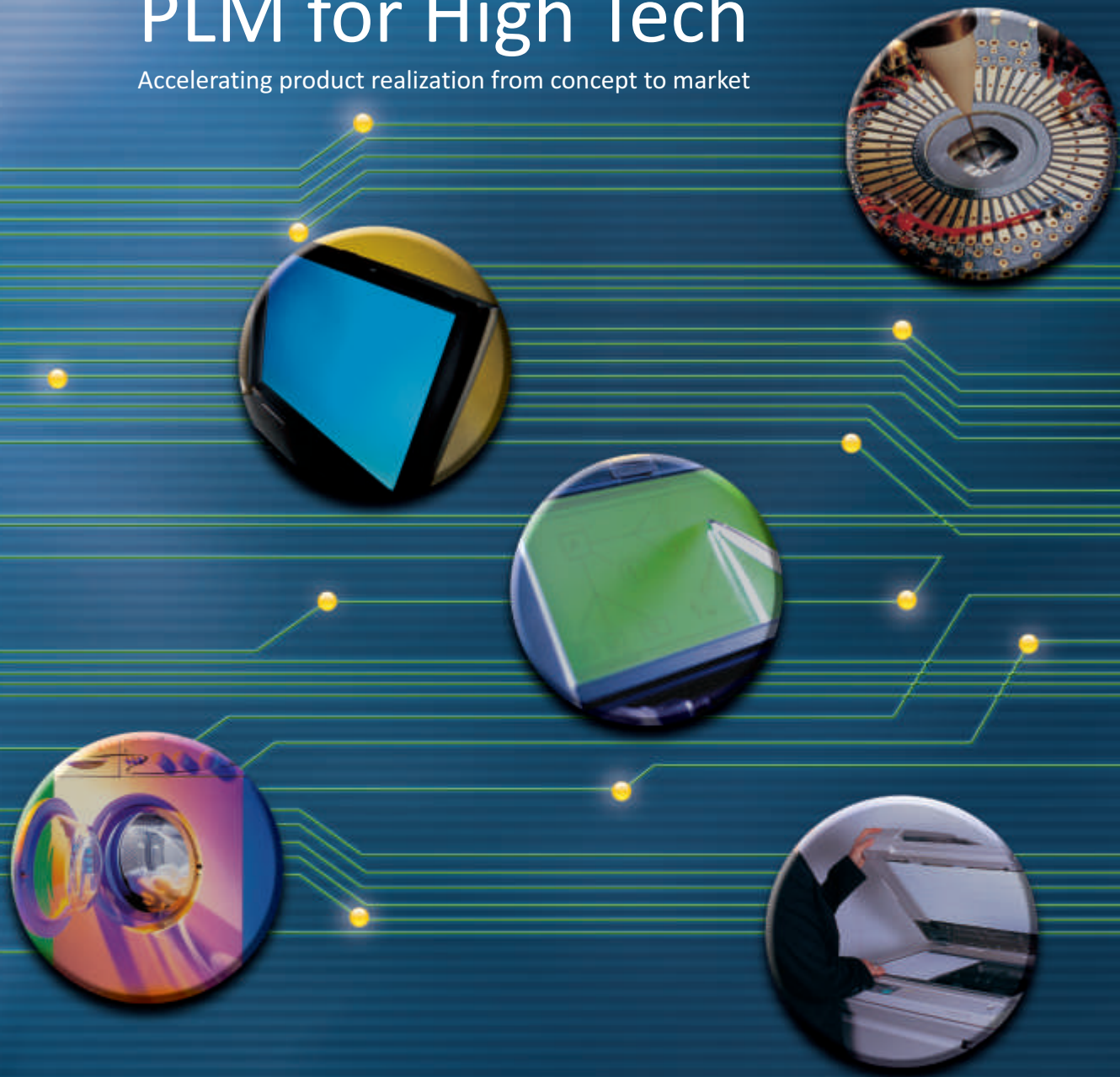


PLM for High Tech

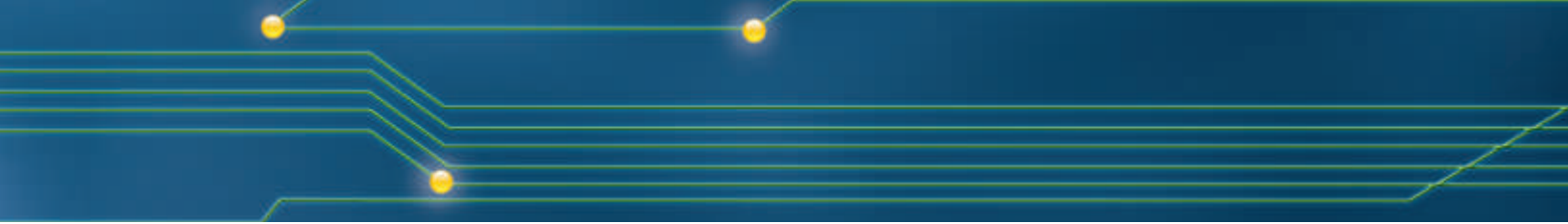
Accelerating product realization from concept to market



The high tech industry works in a highly competitive global environment, coupled with the need for continuous innovation to introduce newer products in a short span of time, while complying with various product governance and environmental regulation. High tech companies must effectively manage costs, reduce time-to-market and optimize complex supply chains to stay competitive. Therefore, companies in this space are constantly seeking ways to accelerate their product realization process.



Geometric



Global Engineering Service Delivery Model

Our unique delivery model combines deep domain expertise in proximity locations with process and task level scalability in near-shore and offshore locations providing better long-term value proposition to our customers. We have close to 3000 employees working across the globe in 10 global delivery centers located in the US, Europe, India and China.

Strategic Alliances

Dassault Systèmes	Gold Partner
Microsoft	Certified Partner
PTC	Gold Tier Partner
Siemens PLM Software	Foundation Partner

Accelerating Product Realization

High tech companies operate in a complex ecosystem of OEMs, design partners, engineering partners, component manufacturers, distributors/ resellers as well as the end customers. The need to manage large product variants while introducing newer sophisticated products in the least possible time is influencing companies to leverage global engineering and manufacturing operations. This has further increased the complexity of the management processes. In today's demanding marketplace, some of the key challenges faced by the industry include establishing multi-discipline BOM, configuration and IP management, cost and quality management, compliance and early supplier collaboration.

Focusing on the high tech industry's intrinsic demands, Geometric enables companies to formulate, implement and execute PLM strategies for achieving their product realization goals from the conceptual to the market stage.

The Geometric Advantage

High Tech Edge

- Experienced in working with leading global high tech customers
- Dedicated High Tech Practice to provide best-in-class services by leveraging our extensive PLM experience to address challenges of today and tomorrow
- Key capabilities in part management, BOM management, configuration management, change management, workflow management, and supplier management for high tech
- Proven solution and implementation expertise using the new Mechatronics features of leading PLM solutions

PLM Experience

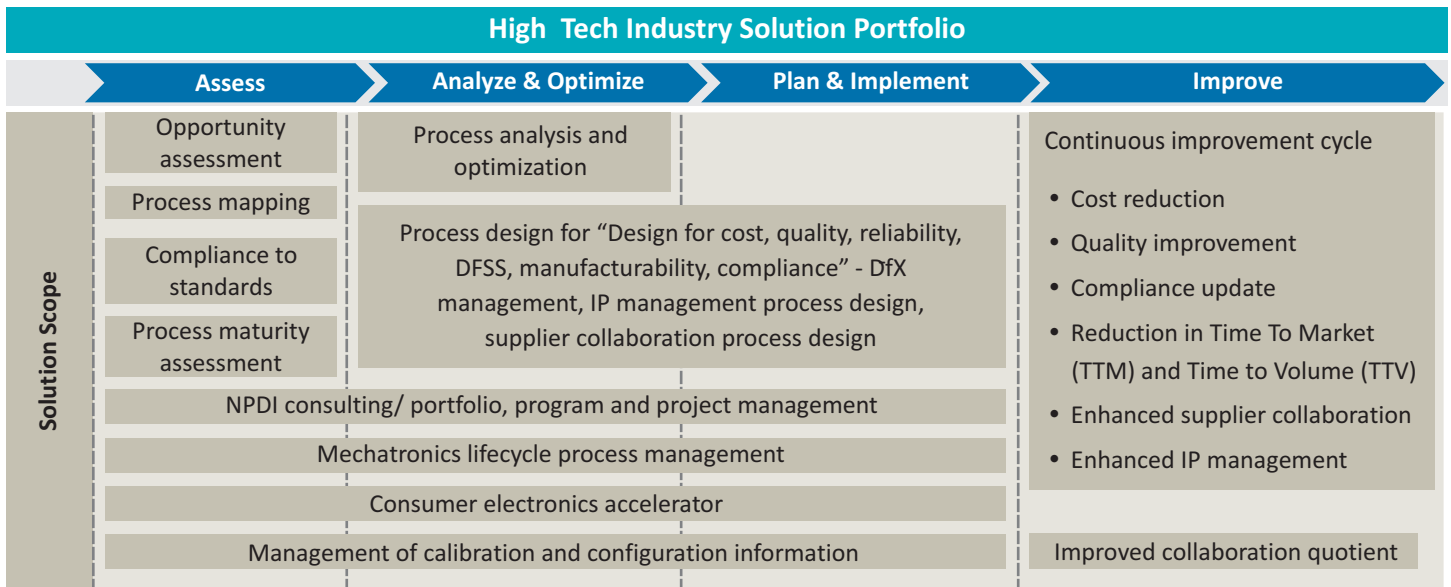
- Over 20 years of experience in PLM
- Over 15,000 person-years of accumulated expertise in developing software solutions in the extended PLM environment

Innovation Focus

- Over 10 years of strong R&D focus leading to innovative patented technologies that improve engineering and manufacturing productivity
- Proven interoperability solutions for information and process integration across the product realization value chain
- We have leveraged our extensive knowledge of the high tech industry to create process specific solution accelerators for:
 - NPDI management to accelerate project transition to PLM
 - Mechatronics lifecycle management to accelerate product architecture for enabling requirement traceability to multi-disciplinary BOM
 - Compliance management assessment
 - Product platform management for consumer electronics
 - Management of calibration and configuration information

What We Offer

Our solutions address the various challenges faced by high tech industry and accelerate realization across the product lifecycle. Depending on the lifecycle stage, we enable our customers to achieve their objectives spanning assessment and optimization, to planning and improvement.



NPDI Management

Geometric facilitates effective management of portfolio, program and projects by integrating the existing PPM tools with PLM or using the inbuilt PPM functionality within PLM. This enables clear visibility of organizational objectives and their relation to business performance.

Mechatronics Lifecycle Management

Geometric has specific solutions for complexity management and collaboration management using PLM. Based on the business needs, we use various techniques supported by standard PLM tools such as platform management, modularization management, design structure matrix management, product line management, multi-disciplinary BOM management, DfX management, and collaboration quotient management.

Compliance Management

Geometrics' PLM solutions manage compliance data, documents related to statutory testing and registrations needed as per various standards like EMC (CE/UL), EuP and ISO. We manage compliance to WEEE, ROHS and REACH regulations, processes related to continuous surveillance, and reporting for compliance to regulations.

IP Management

Geometric has developed IP management solution for semiconductor and non-semiconductor segments. In semiconductor segment, PLM takes advantage of the IP quality metrics promoted by leading semiconductor bodies, and builds processes around them for managing IP. For non-semiconductor segment, the traditional route of patent document management, disclosing documents under legal agreement, and facilitating ITAR based access is used to manage and promote IP collaboration.

Quality Management

Geometric ensures higher ROI on PLM investment by embedding quality management process into the change management process within PLM. We address specific quality processes like APQP, DFMEA, PFMEA, DFSS, DfR using PLM, unlike bespoke solutions that are unable to keep the process and data related to product development within PLM.

Supplier Management

Addressing the complex needs of the high tech industry, Geometric's solutions address supplier management processes from early product conception. We enable various supplier collaboration solutions such as RosettaNet and PPAP within PLM.

High Tech Landscape

Market Segments	Market Sub-Segments
Original Equipment Manufacturer (OEM)	Computers and Office Equipment
	Consumer Electronics
	Network and Communication Equipment
	Industrial Electronics
	Photonics
	Defense Electronics
	Electro Medical Equipment
Semiconductor & Components	Semiconductor Components
	Electronics Components and Accessories
EMS	Electronic Manufacturing Services
Software	Embedded Software

Contact Us

plmsolutions@geometricglobal.com



Success Stories

End-to-end PLM implementation program for Asian high tech major

An Asia-based leading high tech major was unable to derive required benefits out of its existing PLM application. The company was looking for a partner, who could help develop a technical approach for complete ENOVIA MatrixOne implementation. Geometric conducted workshops with end-users and the business team to understand the project requirements. The inputs received from the workshops helped in developing the functional and design specifications for a prototype for data migration and SCM integration for the company. This prototype enabled migration of CAD and non-CAD data from various legacy systems to ENOVIA MatrixOne. Geometric used the OPBOM and NPD accelerator, which helped in configuring existing PLM to suit customer specific business needs. The solution provided by Geometric enabled collaborative product development, thereby, reducing dependence on the existing legacy systems. Consequently, the productivity of designers increased by 15% - 30% and the maintenance costs were reduced by almost 50%.

Rationalizing change management & supplier management for a leading mobile phone OEM

A leading mobile phone company wanted to simplify its change management and supplier management processes, which would accelerate the time-to-market while implementing set-based concurrent engineering processes. Geometric simplified the change process by completely removing Electronic Character Recognition (ECR) and developed processes that helped the company to scale up from sample batch to high volume production. For effective planning, product configuration and sales configuration were treated as separate functions. Geometric also designed a unique parallel and sequential revision scheme to ensure that different stages of product development could be identified. The solution implemented provided complete control on new part introduction across various sites and enabled set-based concurrent engineering and decision making for the client, to help ramp up for high volume production.

About Geometric

Geometric (www.geometricglobal.com) is a specialist in the domain of engineering solutions, services and technologies. Its portfolio of Global Engineering services and Digital Technology solutions for Product Lifecycle Management (PLM) enables companies to formulate, implement, and execute global engineering and manufacturing strategies aimed at achieving greater efficiencies in the product realization lifecycle.

Headquartered in Mumbai, India, Geometric was incorporated in 1994 and is listed on the Bombay and National Stock Exchanges. The company recorded consolidated revenues of Rupees 5.12 billion (US Dollars 108.1 million) for the year ended March 2010. It employs close to 3000 people across 11 global delivery locations in the US, France, Romania, India, and China. Geometric is assessed at SEI CMMI Level 5 for its software services and ISO 9001:2000 certified for engineering operations.

The copyrights/trademarks of all products referenced herein, are held by their respective companies.