



Geometric Software Solutions Co. Ltd.
Plant 6, Pirojshanagar
Vikhroli (West), Mumbai - 400 079 INDIA
Tel.: + 91-22-6705 6500
Fax: + 91-22-6705 6891

Media Release

For immediate release

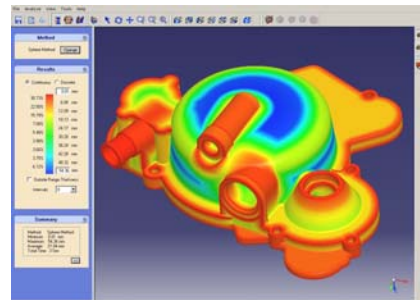
Geometric Software releases 64 bit version of GeomCaliper™ for CATIA V5®

Leverages the power of 64 Bit computing for checking wall thickness of 3D models within CATIA V5®

MUMBAI, India. August 22, 2007

Geometric Software Solutions, a leader in Product Lifecycle Management (PLM) services and technologies, and a Dassault Systèmes CAA V5 Gold Partner, today announced the release of GeomCaliper™ for CATIA V5® with support for 64 Bit Windows XP.

GeomCaliper is an innovative tool for measuring and checking wall thickness of CATIA V5 3D models. It is easy to use and can be accessed within a CATIA V5 session, providing immediate feedback to designers during the design process itself. Among other applications, it helps engineers to quickly detect thin areas in plastic molded components that may result into warps, or thick sections in castings that may result in hot spots. Minimal training is required to use the tool and interpret the generated results.



In this new release, available for CATIA V5 R16 and R17, designers will be able to perform sophisticated thickness analysis on 64 bit machines.

“GeomCaliper lets user make semi-automatic 3D analysis on the entire model,” said Mario BASILE, PSA PEUGEOT CITROËN. “GeomCaliper input data are exactly the same data that are produced from user, no additional pre processing is needed: GeomCaliper reads directly CATIA V5 files!” He further added, “GeomCaliper integration in PSA environment has been easy and low cost; its interface with CATIA V5 is good and improved at every new release.”

Benefits of GeomCaliper™

- Quick and easy design checks for manufacturability
- Early analysis and design correction results in improved part quality and downstream cost savings
- Improved design productivity

A free 15-day trial version is available from <http://geomcaliper.geometricsoftware.com>

About Geometric

Geometric is a specialist in the domain of engineering solutions, services and technologies. Its portfolio of Global Engineering services and Digital Technology solutions for Product Lifecycle Management (PLM), enable companies to formulate, implement, and execute global engineering and manufacturing strategies aimed at achieving greater efficiencies in the product realization lifecycle.

Geometric was incorporated in 1994 and is headquartered in Mumbai, India. It is listed on the Bombay Stock Exchange (BSE: 532312) and the National Stock Exchange (NSE: GEOMETRIC) in India. The company recorded revenues of 3.95 Billion Rupees (85 Million US Dollars), with market capitalization of 6.2 Billion Rupees (142 Million US Dollars), for its consolidated operations for the year ending March 2007.

The company has two main business subsidiaries. Modern Engineering, Inc., headquartered in Rochester Hills MI, provides product engineering and manufacturing engineering solutions to the automotive and industrial sectors. Teksoft, Inc., headquartered in Phoenix AZ, develops and supplies cutting-edge productivity solutions for manufacturing operations.

Geometric employs over 2500 people delivering solutions from 10 global delivery locations in the US, France, Romania, India, and China. The company is certified at SEI CMMI Level 5 for its software services and the engineering operations are ISO 9001:2000 certified.

Geometric has a joint venture with Dassault Systemes, 3D PLM Software Solutions Ltd., which was set up in 2002 with an equity participation of 70% and 30% respectively.

For further details about Geometric, please visit www.geometricsoftware.com.

For more information, please contact:

Media Relations

Gargi Sharma

+91.20.66526184

Gargi.Sharma@geometricsoftware.com

Product Related Information

GC.marketing@geometricsoftware.com